

Fast Load Pump Head

Model No. : YZ35-II

Flow Rate : 0.69-12000mL/min



Product Features

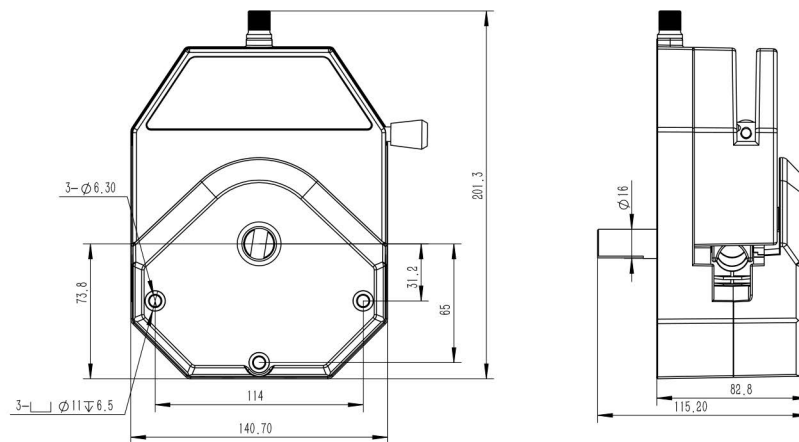
- 1.YZ35-II pump head housing is produced with high-pressure die-casting aluminum, ensuring high strength and good consistency.
- 2.Equipped with a standard electromagnetic sensor that outputs a cover-open to stop signal to enable the cover-open to stop function.
- 3.The optimized tubing clamp structure allows for easy installation and removal of the tubing, preventing abnormal damage to the tubing.
- 4.Added a lever limiter to securely fix the lever, preventing loosening due to vibrations.
- 5.304 stainless steel roller assembly, resistant to liquid leakage and corrosion.

Technical specifications

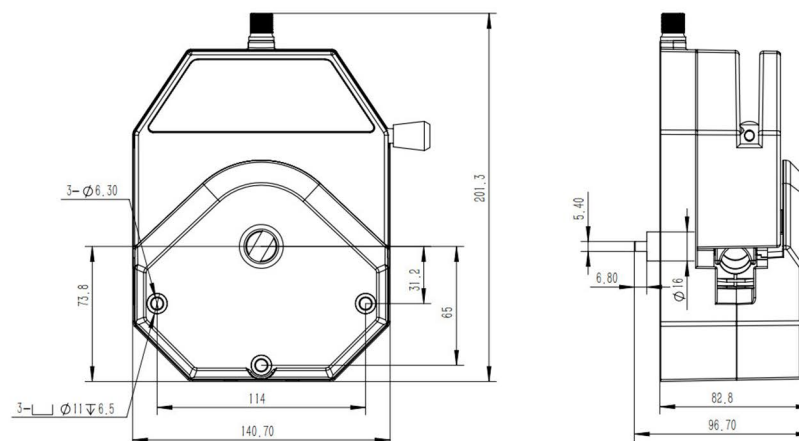
Pump Head	Tubing	ID×Wall thickness(mm)	mL/r	(speed0.1-600rpm) Flow Rate(mL/min)	Tubing pressure resistance(Mpa)		Material	Weight (kg)
					Continuous	Intermittent		
YZ35-II	26 [#]	6.4x3.3	6.9	0.69-4200	0.27	0.2	Cast aluminum alloy	2.8
	73 [#]	9.6x3.3	12.3	1.23~7400	0.27	0.2		
	82 [#]	12.7x3.3	20	2~12000	0.14	0.1		



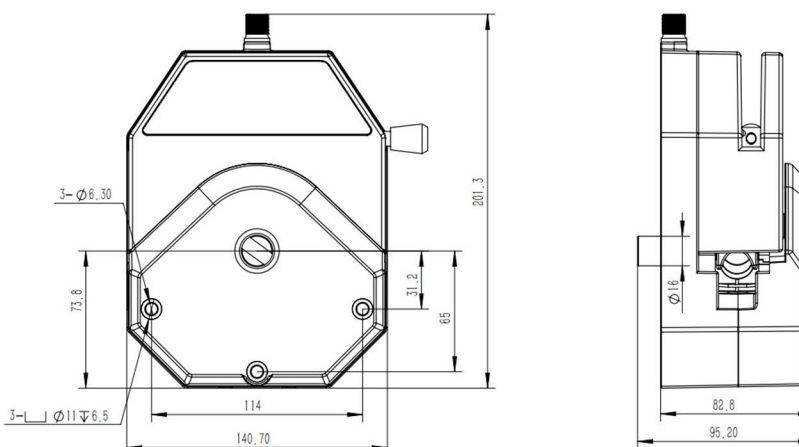
Dimension Drawing (Unit:mm)



YZ35-II (Round Shaft)



YZ35-II (Flat Shaft)



YZ35-II (Short Round Shaft)