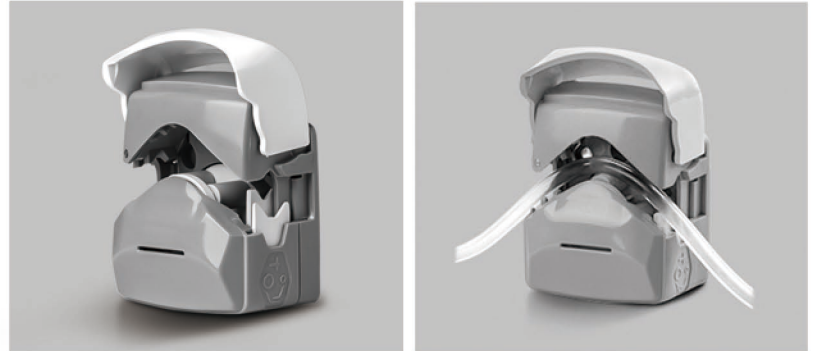


# Compact Pump Head

**Model No: KT15**

**Flow Rate : 0.0033-560.04mL/min**



## Product Features

Exquisite appearance, small size. The upper pressing block is opened by a turning method, and the operation is simple.

The elastic upper block can reduce tubing wear. Quickly replace tubing with self-adaptive tube clamp. Suitable for 5 different sizes of hoses to meet different flow requirements.

## Typical Application

Medical equipment, biotechnology, pharmaceutical

Chemical and food industries

## Technical Specifications

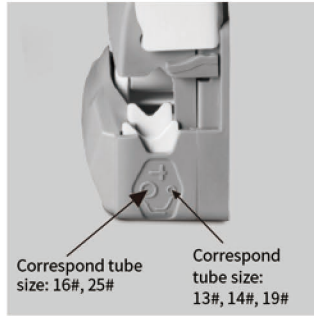
| Pump Head | Channel number | Tubing | ID×Wall thickness(mm) | mL / r | Speed(rpm) | Flow Rate(mL/min) | Weight(kg) |
|-----------|----------------|--------|-----------------------|--------|------------|-------------------|------------|
| KT15      | Single channel | 13#    | 0.8×1.6               | 0.033  | 0.1~600    | 0.0033~19.97      | 0.096      |
|           |                | 14#    | 1.6×1.6               | 0.156  |            | 0.0156~93.42      |            |
|           |                | 19#    | 2.4×1.6               | 0.286  |            | 0.0286~171.6      |            |
|           |                | 16#    | 3.1×1.6               | 0.477  |            | 0.0477~286.32     |            |
|           |                | 25#    | 4.8×1.6               | 0.933  |            | 0.0933~560.04     |            |



## Tubing Installation



1. Lift the flip top of the pump head to open the pump head.



2. Adjust the tube holder to the position corresponding to the installed size.



3. Put the tubing into the pump head.



4. Close the flip top of the pump head downward to complete the installation.

## Dimension Drawing (Unit:mm)

