

# Compact Pump Head

**Model No:** KD15/KD25

**Flow Rate:** 0.006-2880mL/min



## Product Features

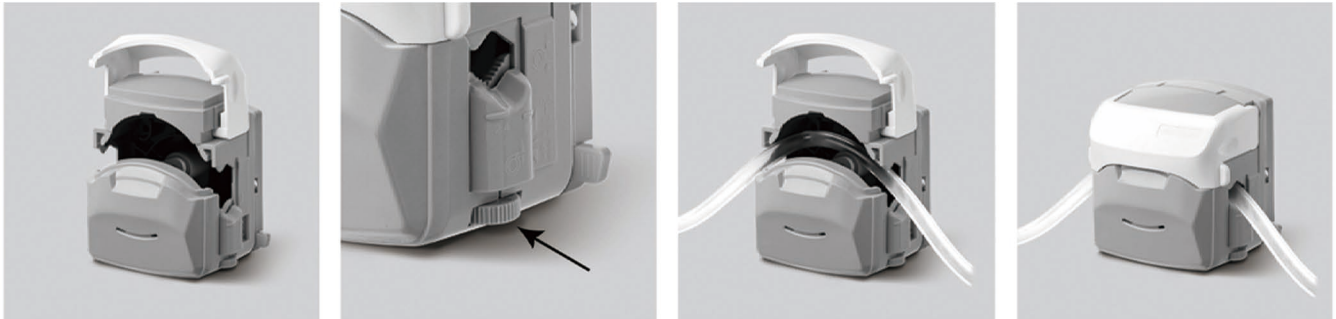
KD15/KD25 series, compact type peristaltic pump head, is easy to operate, for opening the upper block by flipping the cover, that enables quick tubing replacement. Rubbing mechanism can adjust lower tube clamp position, to fix different materials and diameters tubing. The product is divided into 3 rollers and 4 rollers, and can use tubing with two different wall thicknesses: 1.6mm wall thickness and 2.4mm wall thickness. Customers can flexibly choose according to their own needs.

## Technical Specifications

Pump Head	Tubing	ID×Wall thickness(mm)	Speed (rpm)	Flow Rate(mL/min) (3 rollers)	Flow Rate(mL/min) (4 rollers)	Tubing pressure resistance(Mpa)		Weight (kg)
						Continuous	Intermittent	
KD15	13 <sup>#</sup>	0.8x1.6	0.1-600	0.0083-50.3	0.0079-47.37	0.27	0.17	0.37
	14 <sup>#</sup>	1.6x1.6		0.0281-168.4	0.0267-160.37			
	19 <sup>#</sup>	2.4x1.6		0.0613-367.97	0.0544-326.13			
	16 <sup>#</sup>	3.2x1.6		0.1006-603.5	0.0942-565.47	0.24	0.14	
	25 <sup>#</sup>	4.8x1.6		0.2243-1345.83	0.2103-1262			
	17 <sup>#</sup>	6.4x1.6		0.3297-1978.1	0.2915-1748.93			
KD25	18 <sup>#</sup>	7.9x1.6	0.5047-3027.97	0.4483-2690	0.10	0.07	0.37	
	15 <sup>#</sup>	4.8x2.4	0.2513-1507.6	0.1979-1187.55	0.27	0.17		
	24 <sup>#</sup>	6.4x2.4	0.3912-2346.95	0.2909-1745.5				



## Tubing Installation



1. Lift the flip top of the pumphead to open the pump head.

2. Rubbing wheel adjustment

3. Put the tubing into the pump head.

4. Close the flip top of the pump head downward to complete the installation.

## Dimension Drawing (Unit:mm)

