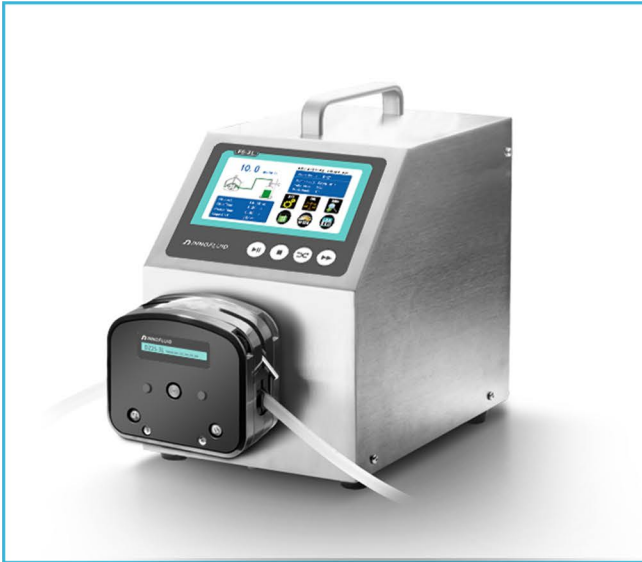




Flow Rate Peristaltic Pump

Model NO. : F6-3L

Flow Rate : 0.211-3600mL/min



Product Features

Suitable for large flow rate, high efficiency, high precision filling.

Closed-loop stepper motor drive, accurate control, strong driving force.

304 stainless steel drive housing can support the filling line.

Two working mode: Volume dispensing and speed dispensing (special for viscous liquid filling)



Pump Head



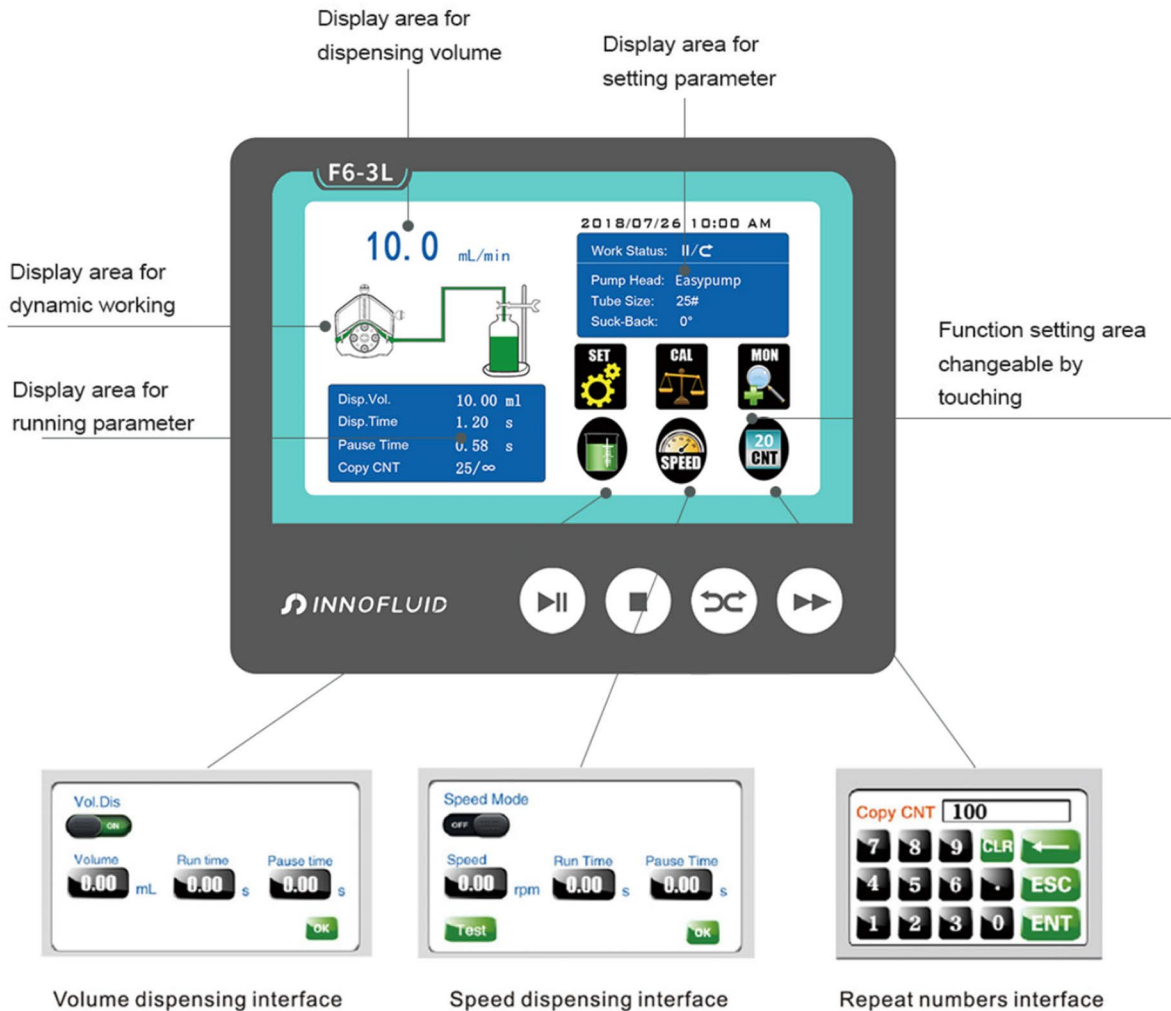
DZ25-3L(PPS)



DZ25-3L(Aluminium Alloy)

Drive	Motor Type	Pump Head	Tubing Size	Speed Range(rpm)	Flow Rate(mL/min)
F6-3L	Closed-loop stepper motor	DZ25-3L	15#, 24#, 35#, 36#	0.1-600	0.211~3600

Screen Display



Technical Specifications

Flow rate range	0.211~3600 mL/min
Speed range	0.1-600 rpm
Speed resolution	0.01 rpm
Dispensing volume range	0.1-9999.99 mL
Dispensing volume resolution	0.01 mL
Dispensing time	0.1-9999.99 s
Pause time	0.1-9999.99 s
Time resolution	0.01 s
Copy numbers	1-9999 times, setting '0' means unlimited
Back suction angle	0-360°
Dispensing accuracy	<±0.5%
Motor type	Closed-loop stepper motor
Display	Industrial grade 4.3" color LCD display
Control method	Touch screen and Mechanical keypad
Keypad lifetime	300,000 times
Start/stop, direction signal	Passive switch signal, such as foot pedal switch; Active switch signal: 5-24V
Output interface	Output motor working status (Open-Collector output)
Communication interface	RS232, RS485 support Modbus protocol (RTU mode)
Power supply	AC 220V±10% 50Hz/60Hz (Standard) AC 110V±10% 50Hz/60Hz (Optional)
Drive dimension	223×152×231mm
Drive weight	5.02kg
Power consumption	<80W
Condition temperature	0-40°C
Relative humidity	<80%

Dimension Drawing(Unit: mm)

