



Dispensing Peristaltic Pump

Model No.: F6

Flow Rate: 0.0002-2580mL/min



Product Introduction

Intelligent dispensing peristaltic pump, imported 4.3 inch industrial grade true color LCD screen, touch screen control. Can preset the dispensing volume, dispensing time, pause time, copy numbers. Can save 60 common filling modes. Touch screen control, can preset the dispensing volume, dispensing time, pause time, copy numbers and back suction angle. Animation display the working status. Dispensing data, setting data and system setting display in the same screen. Industry application: Pharmaceutical Equipment, Filling Machine; Medicine, cosmetic, food and beverage filling.

Product Features

- Imported 4.3" industrial grade color LCD screen display, with touch screen control.
- Can preset dispensing volume, dispensing time, pause time and copy numbers.
- With intelligent calibration function and online micro adjusting function.
- The pump can store 60 commonly used filling modes.
- Back suction angle setting, avoid liquid drop off when the pump stops working.
- Two working mode: Volume dispensing and speed dispensing (special for viscous liquid)
- Can communicate with balance, closed-loop control.



Pump Head



EasyPump Pump Head

EasyPump-PPS Pump Head

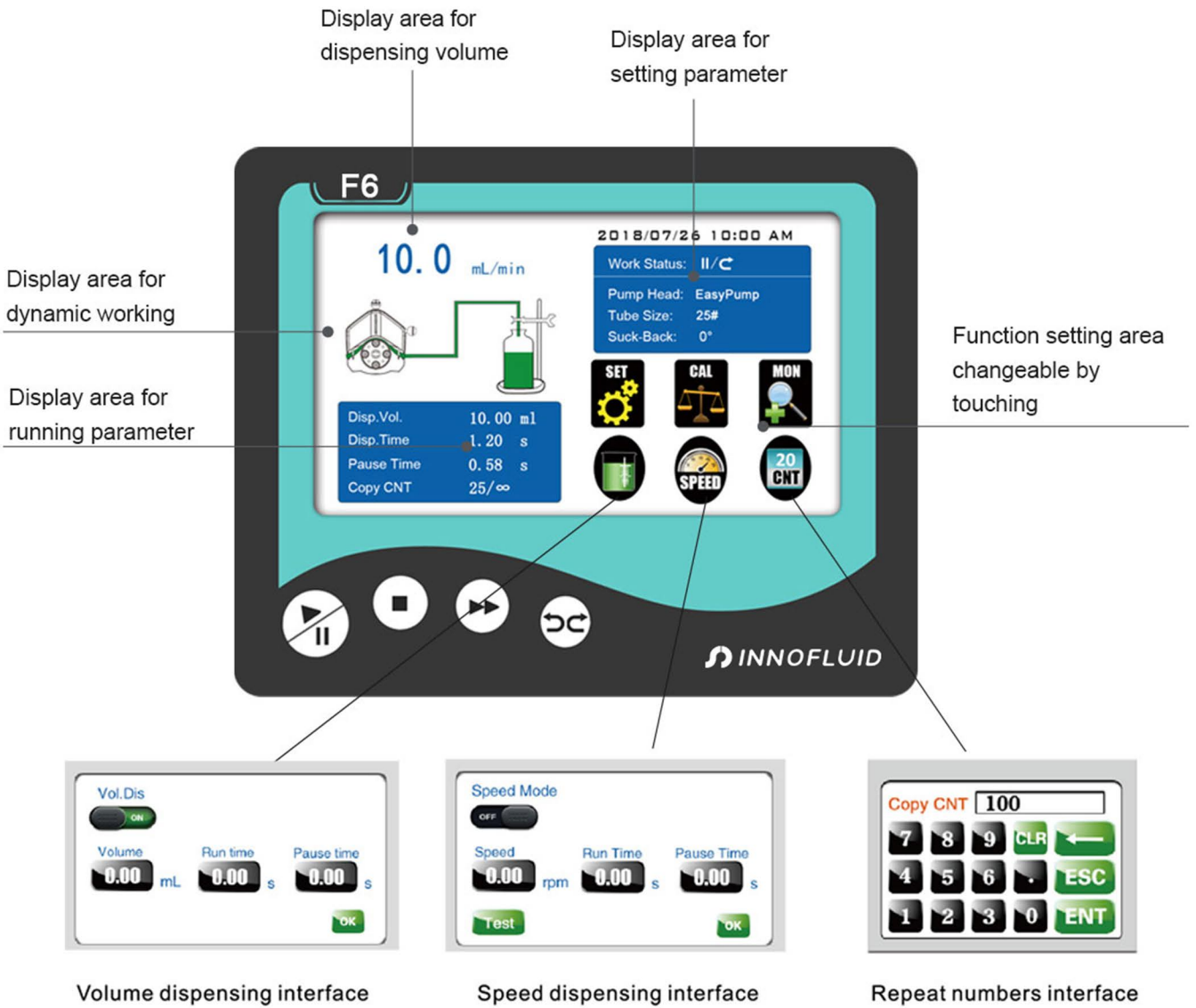
AMC Pump Head

YZ Pump Head

| Drive&Speed | Pump Head | Tubing Size | Flow Rate(mL/min) |
|------------------|-----------------|---|---|
| F6 0.1-600rpm | EasyPumpI/III | 13#, 14#, 19#, 16#, 25#, 17#, 18# | 0.0053-2580 |
| | EasyPumpII/IV | ————— | ————— |
| | EasyPumpV/VI | 13#, 14#, 19#, 16# | 0.0053-560 |
| | 2*EasyPumpI/III | 13#, 14#, 19#, 16#, 25# | 0.0053-1180 |
| | 2*EasyPumpII/IV | ————— | ————— |
| | 2*EasyPumpV/VI | 13#, 14#, 19#, 16# | 0.0053-560 |
| | AMC1-AMC12(10) | Inner diameter:0. 13~3mm Wall thickness: 0.8~1mm | 0.0002-48(suggestion working speeds≤150rpm) |
| | AMC1-AMC12(6) | | 0.0002-65(suggestion working speeds≤150rpm) |
| | YZ1515x | 13#, 14#, 19#, 16#, 25#, 17#, 18# | 0.007-2280 |
| | YZ2515x | 15#, 24# | 0.17-1740 |



Screen Display





Technical Specifications

| | |
|------------------------------|---|
| Flow rate range | 0.0002-2580mL/min |
| Speed range | 0.1-600rpm |
| Speed resolution | 0.01rpm |
| Dispensing volume range | 0.1-9999.99mL |
| Dispensing volume resolution | 0.01mL |
| Dispensing time | 0.1-9999.99S |
| Pause time | 0.1-9999.99S |
| Time resolution | 0.01s |
| Copy numbers | 1-9999 times, setting'0' means unlimited |
| Back suction angle | 0-360° |
| Dispensing accuracy | < +0.5% |
| Motor type | Stepper motor |
| Display | Industrial grade 4.3" color LCD display |
| Control method | Touch screen and Mechanical keypad |
| Keypad lifetime | 300,000 times |
| Start/stop, direction signal | Passive switch signal, such as foot pedal switch; Active switch signal: 5-24V universal |
| Output interface | Output motor working status(Open-Collector output) |
| Communication interface | RS232, RS485 Modbus protocol (RTU mode) |
| Power supply | AC 220V+10% 50Hz/60Hz (Standard) AC 110V+10% 50Hz/60Hz (Optional) |
| Drive dimension(L xWxH) | 252x152x243 mm |
| Drive weight | 4.20 kg |
| Power consumption | < 80W |
| Condition temperature | 0-40°C |
| Relative humidity | < 80% |

Dimension Drawing(Unit: mm)

